



SMT Vacuum(진공) Reflow

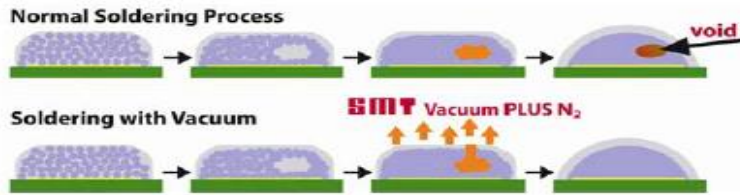
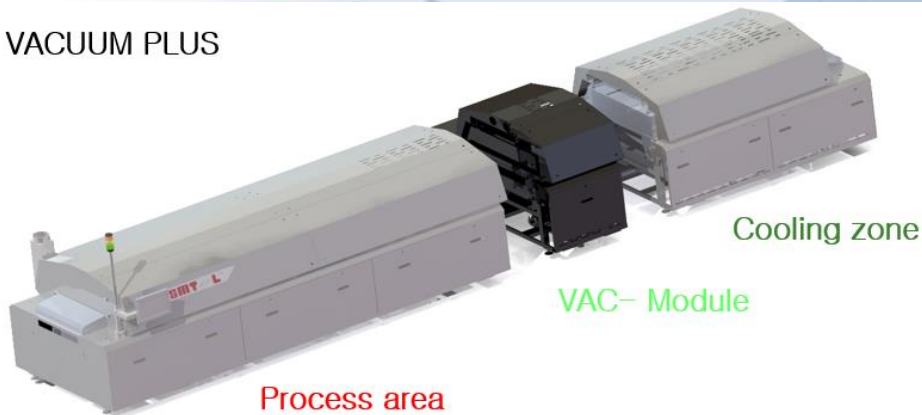
- ◆ Vacuum Reflow 사양
- ◆ Vacuum Reflow 구성
- ◆ Normal Soldering Process **VS** Vacuum Soldering
- ◆ Vacuum Chamber
- ◆ Vacuum Reflow 프로파일
- ◆ Void X-ray 검사

SMT Vacuum Reflow Soldering System

1 SMT Vacuum(진공) Reflow 구성

<SMT Vacuum Plus N₂>
기존 Reflow + Vacuum-Module

VACUUM PLUS

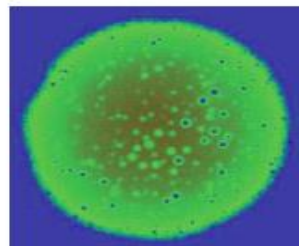


Vacuum Plus N₂

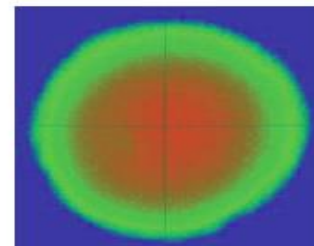
World's latest innovation in soldering

- No voids

The perfect soldering joint is becoming reality:



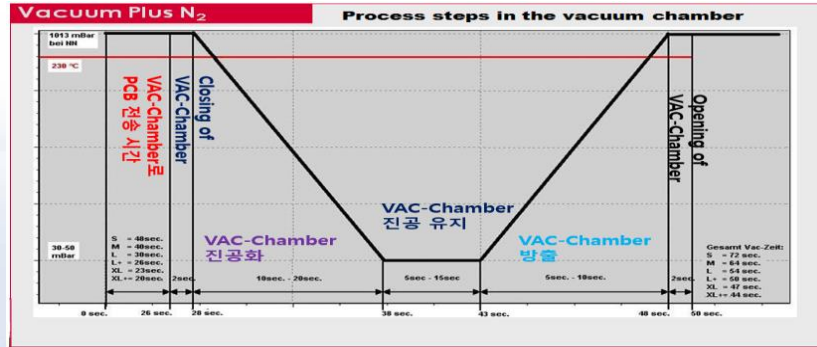
normal soldering process



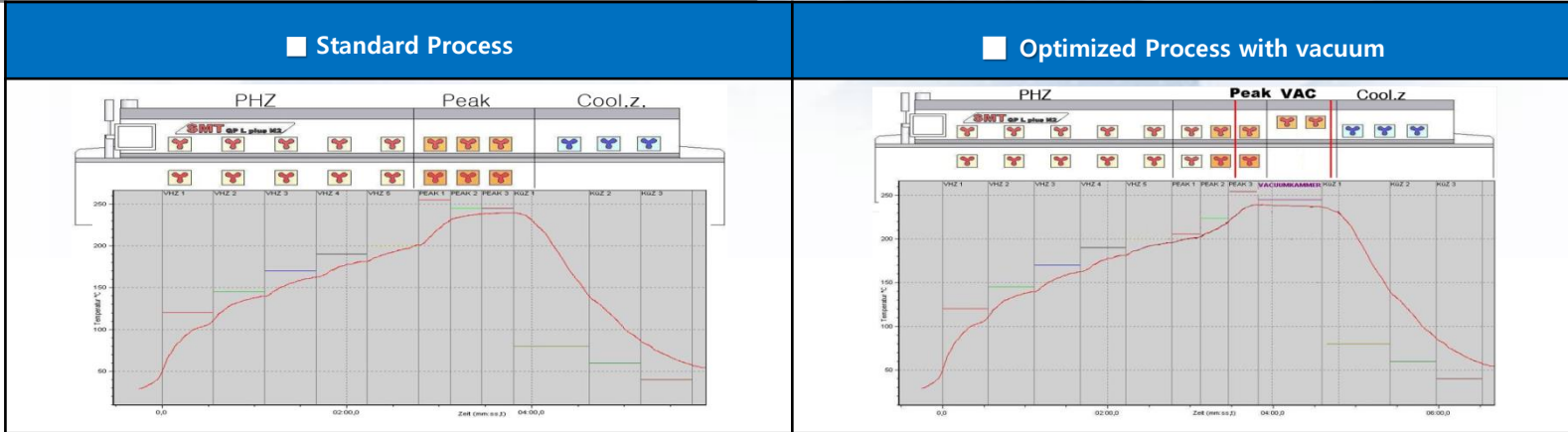
soldering with vacuum

SMT Vacuum Reflow Soldering System

2 Vacuum Chamber



3 SMT Vacuum(진공) Reflow Profile



SMT Vacuum Reflow Soldering System

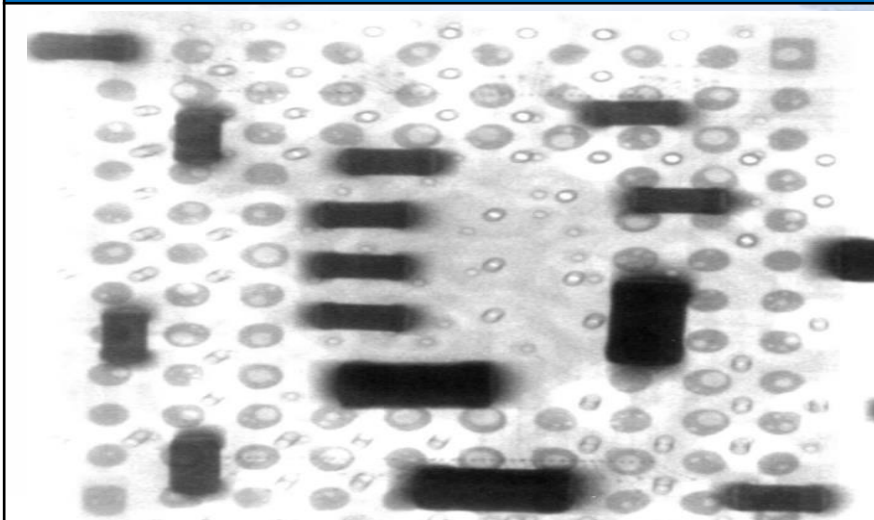


4

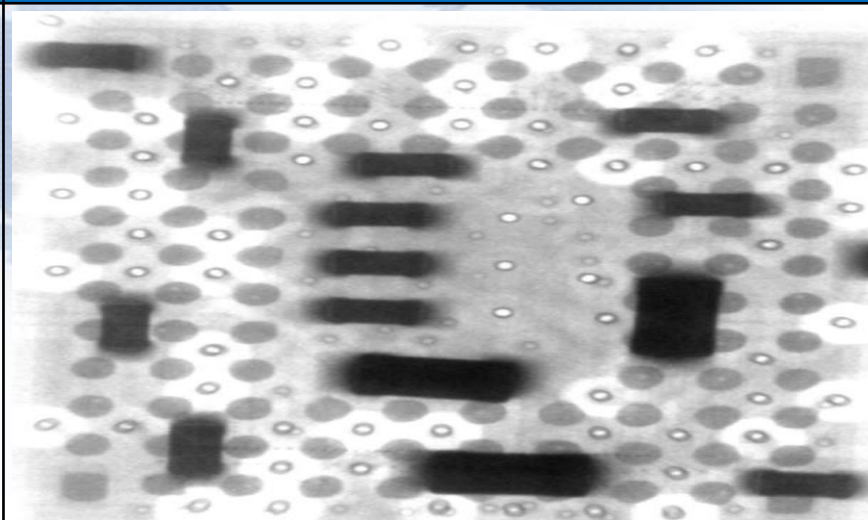
Void X-Ray 검사

SONY IMX477-AACK-C

■ Normal Soldering Process



■ Vacuum Soldering

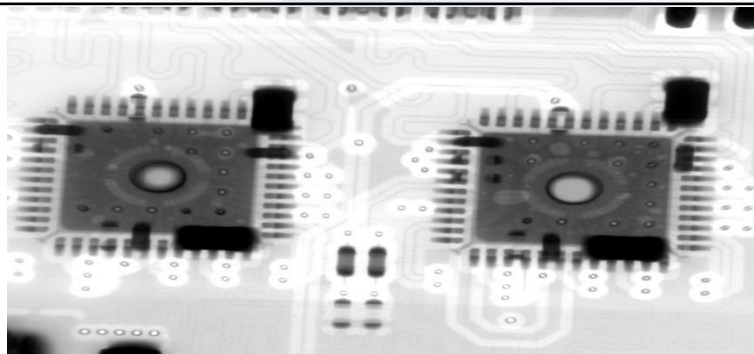
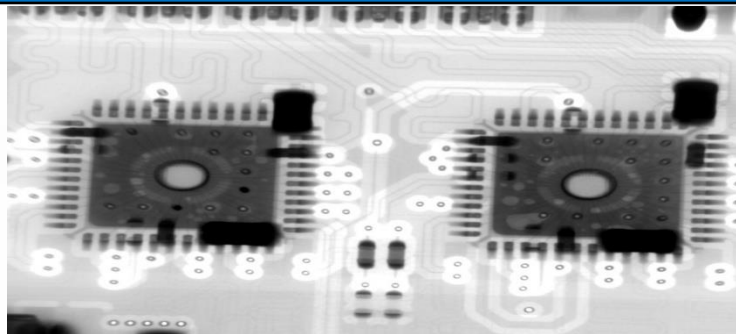


SMT Vacuum Reflow Soldering System

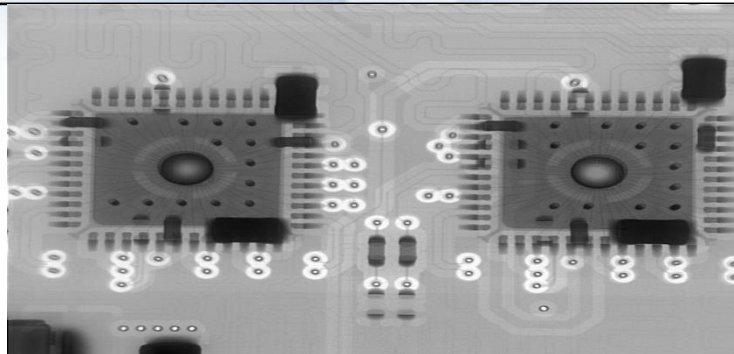
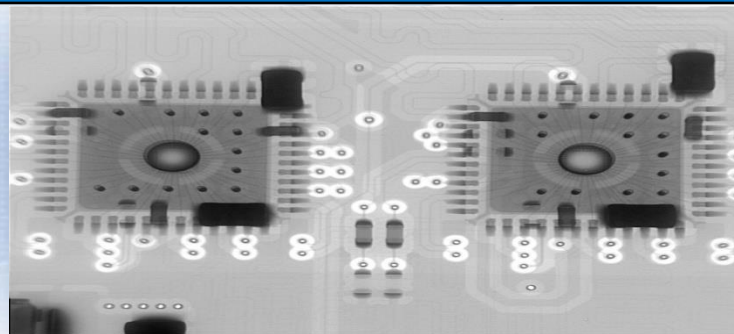
5

Void X-Ray 검사

■ Normal Soldering Process



■ Vacuum Soldering

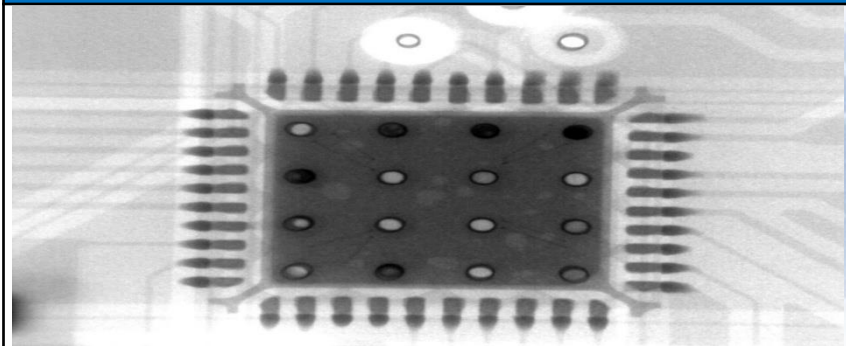


SMT Vacuum Reflow Soldering System

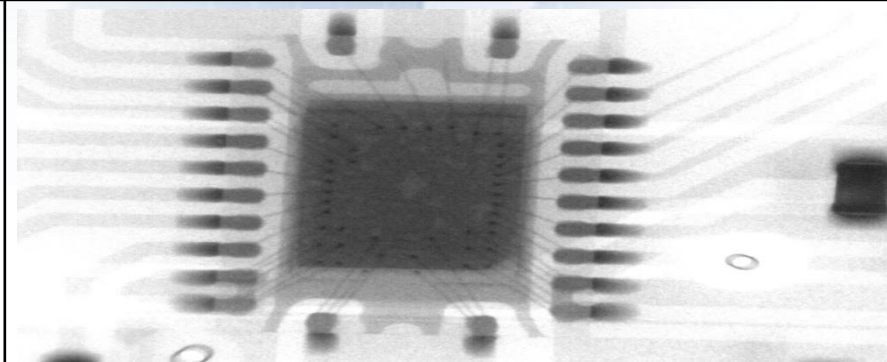
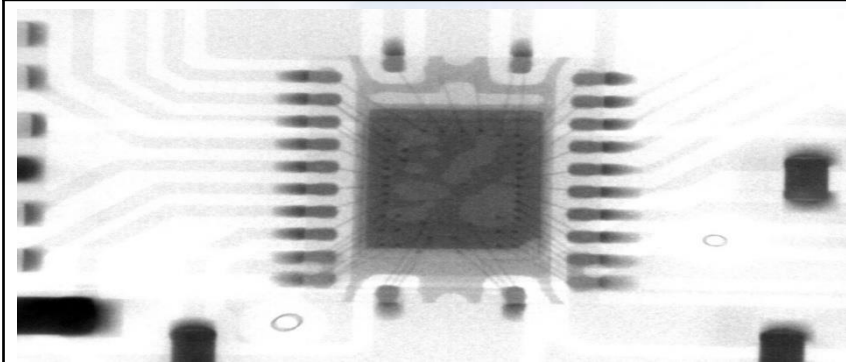
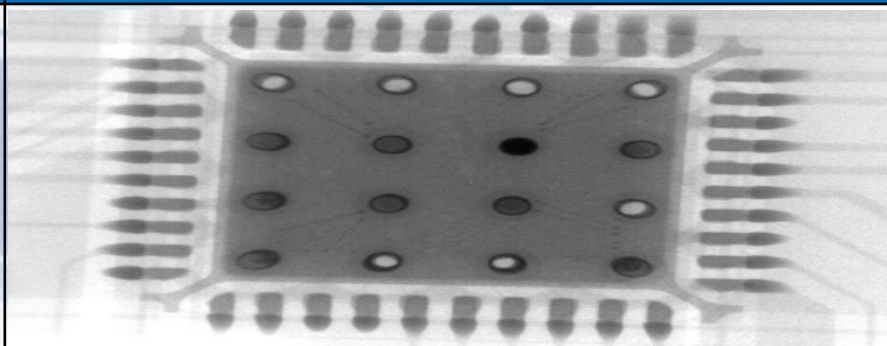
5

Void X-Ray 검사

■ Normal Soldering Process



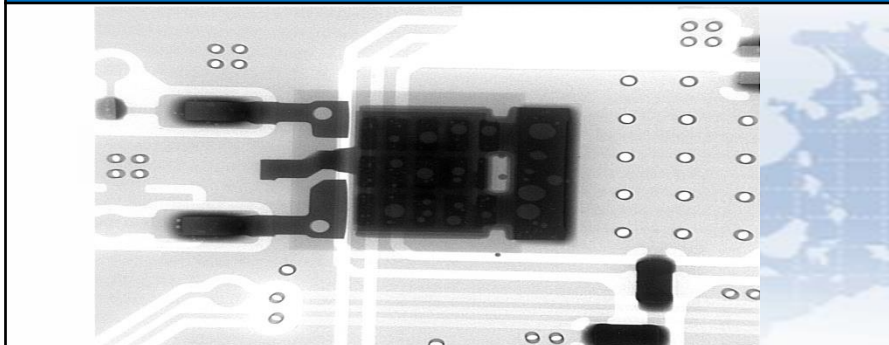
■ Vacuum Soldering



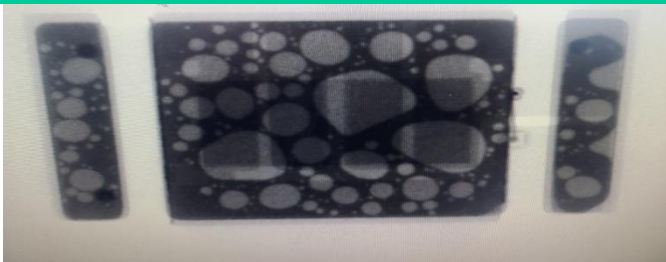
SMT Vacuum Reflow Soldering System

5 Void X-Ray 검사

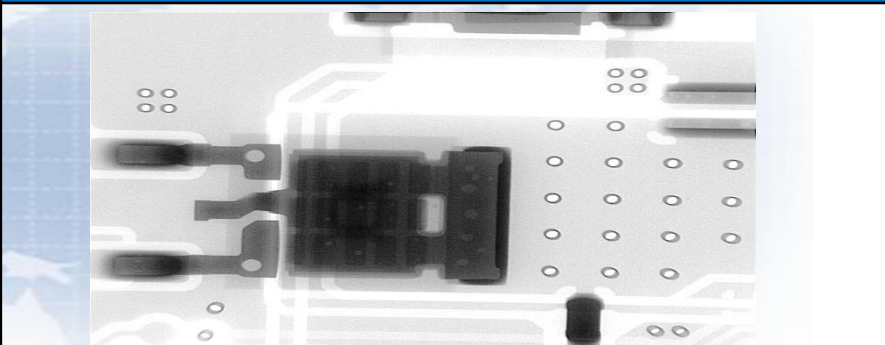
■ Normal Soldering Process



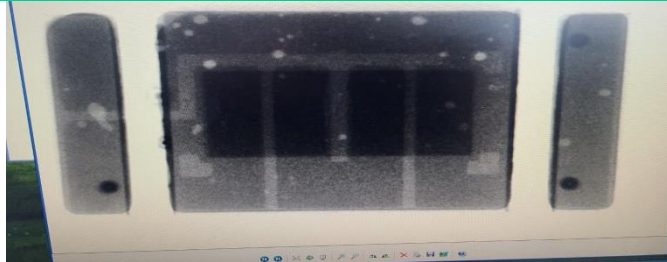
메탈 PCB LED
N2 리플로우 사용



■ Vacuum Soldering



메탈 PCB LED
N2 리플로우 사용이후 진공리플로우 사용

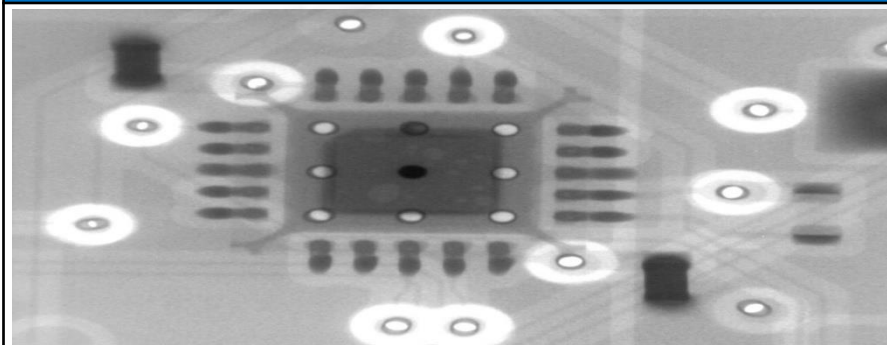


SMT Vacuum Reflow Soldering System

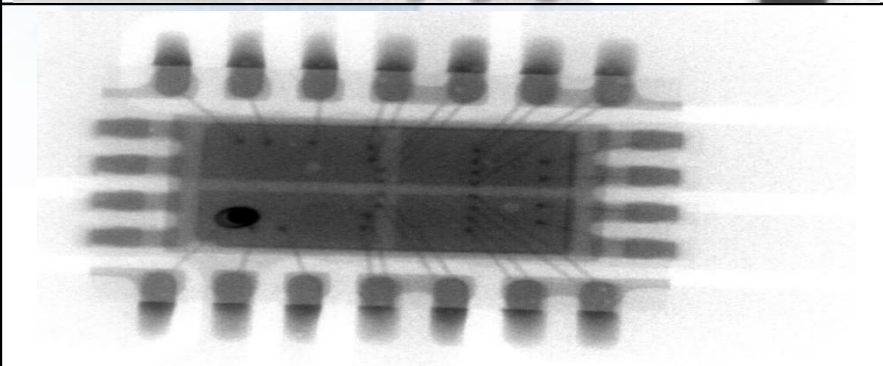
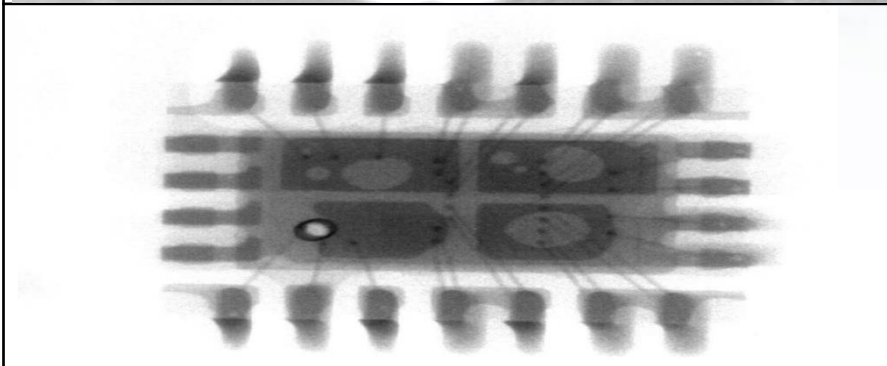
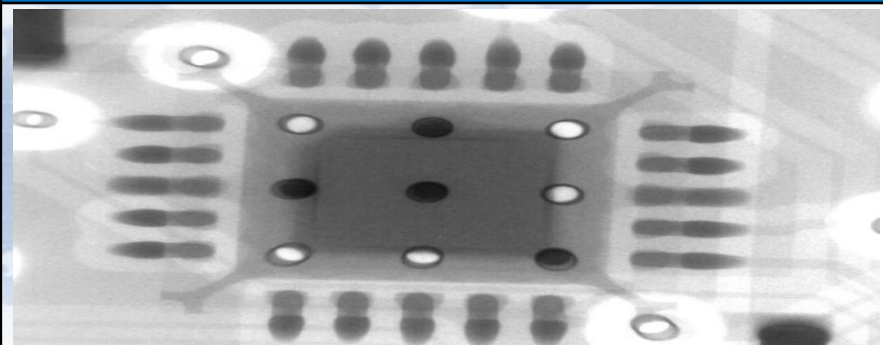
5

Void X-Ray 검사

■ Normal Soldering Process



■ Vacuum Soldering



감시합센이다

Contact

본사 : 경기도 군포시 고산로 126번길 8

Tel. +82 - 31 - 427- 8461

Fax. +82 - 31 - 427- 8469

SMT 사업부 : 경기도 군포시 당정동 78-17 3F



 (주)자이드